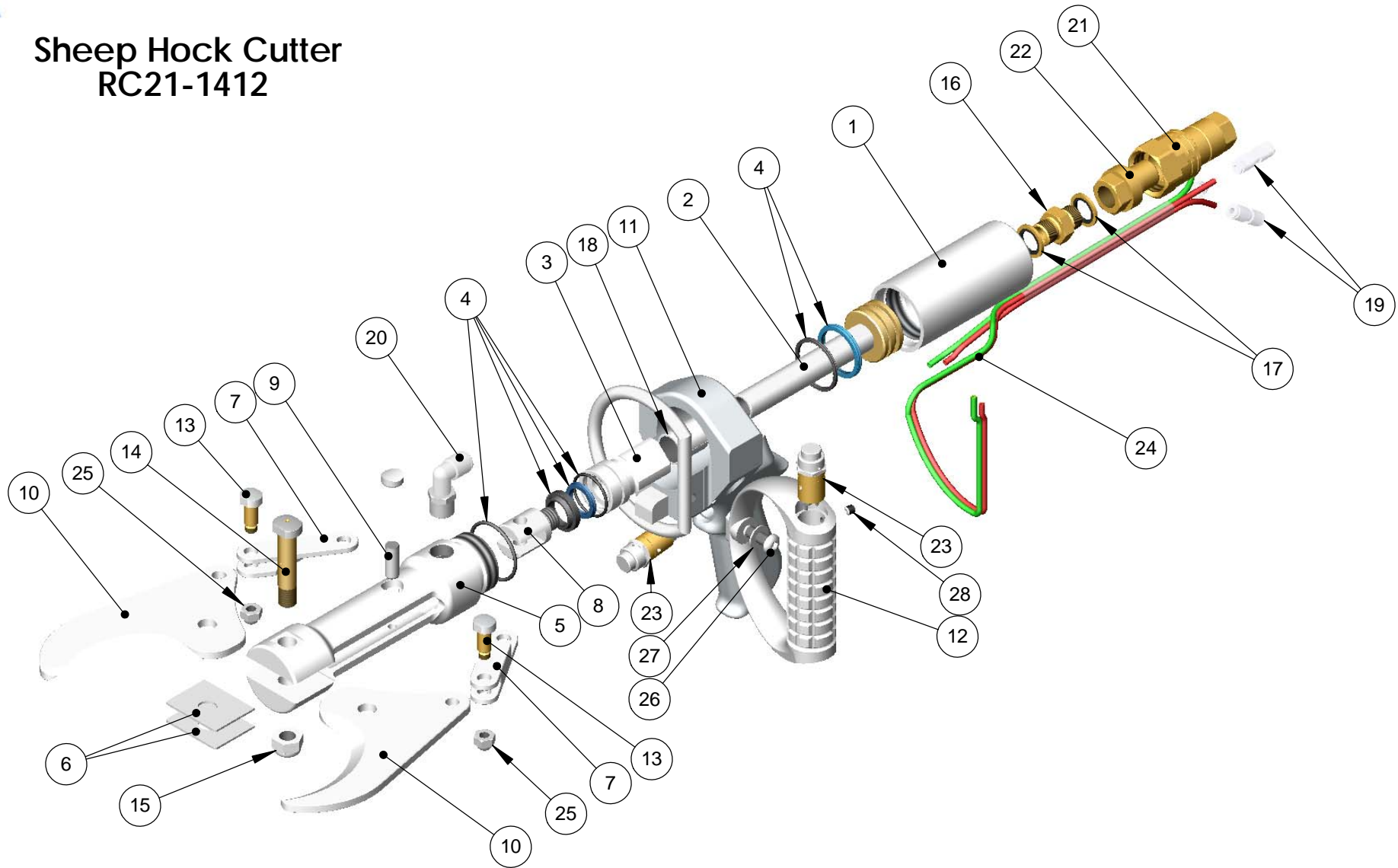


Sheep Hock Cutter  
RC21-1412





## Sheep Hock Cutter RC21-1412

ITEM NO.	QTY.	PART NO.	DESCRIPTION
1	1	110-212102-A	Hydraulic Cylinder Body
2	1	110-212104-B	Piston & Rod Assy
3	1	110-212106-A	Hydraulic Bearing Carrier
4	1	110-222105-A	Seal Kit
5	1	120-213001-A	Clevis Tube
6	2	120-223002-A	Slipper Plate S/S
7	2	130-214103-A	Cam Link
8	1	130-224101-A	Yoke
9	1	130-224102-A	Yoke Pin
10	1	140-215101-A	Scissor Blade Standard (Pair)
11	1	150-206101-A	Pistol Grip Complete
11.1	1	150-206102-A	Pistol Grip Only
11.2	2	800-CSM820-304	Cap Screw M8x20 304
11.3	1	150-206103-A	Hanger Ring
11.4	2	800-RP4X45-304	M4 x 45 Roll Pin
12	1	150-206104-A	D-Handle
13	2	160-217104-A	Cam Bolt
14	1	160-227101-A	Pivot Bolt
15	1	160-227102-A	Pivot Bolt Nut
16	1	180-BB06-06	Straight Fitting 3-8BSPP
17	2	180-D-06	Dowty Seal 3-8BSP
18	1	180-DU3-4x7-8x1	DU Bush
19	4	180-KQ2H04-00	Straight Connector 4mm
20	1	180-KQ2L08-03S	Elbow Push Fit Connector
21	1	180-QVV-F06	Hydraulic Coupler Female
22	1	180-QVV-M06	Hydraulic Coupler Male
23	2	190-209508-B	Pilot Valve
24	1	800-2-MP4	4mm Twinline
25	2	800-ANM8-304	M8 Acorn Nut
26	1	800-BHM820-304	M8x20 Button Head Screw 304
27	1	800-FWM8-304	M8 Flat Washer
28	2	800-GSM66-304	M6x6 Grub Screw